

# ROAD TRIP SCAVENGER HUNT



STOP SIGN



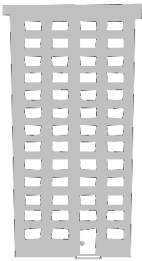
TAXI CAB



SPEED LIMIT SIGN



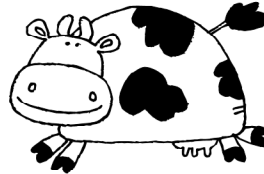
GAS STATION



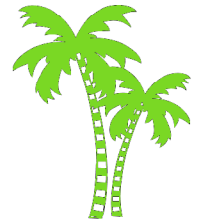
TALL BUILDING



WINDING ROAD SIGN



COW



PALM TREES



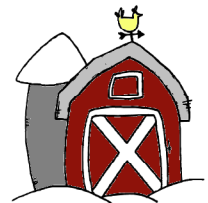
TRAIN CROSSING SIGN



BUS



DO NOT ENTER SIGN



FARM



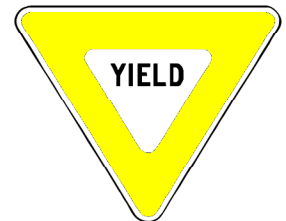
CROSSWALK SIGN



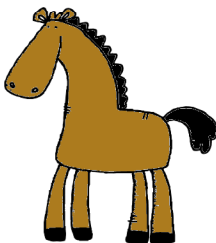
BRIDGE



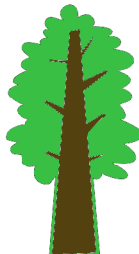
STOP LIGHT



YIELD SIGN



HORSE



TREE



DO NOT PASS SIGN



AIRPLANE